

**RMI® Parts for Taylor Wharton Style XL-55 HP PB-Econo**



**CROSS**

Part # FIT-X14

Cross Brass 1/4 FPT Forged

00



**CGA FITTINGS AND DUST CAPS**

**INERT ARGON/NITROGEN FITTINGS**

**CGA 580**

Part # CGA-58038  
Inert Gas 3/8" NPT

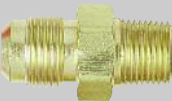
1



2 3

**CGA 295**

Single Item - Part # CGA-29538  
(Pkg. of 10 - Part # CGA-29538-PK10)  
Inert Vent and Liquid 3/8" NPT



**OXYGEN FITTINGS**

**CGA 540**

Part # CGA-54038  
Oxygen Gas use  
3/8" NPT

1



2 3

**CGA 440**

Single Item - Part # CGA-44038  
(Pkg. of 10 - Part # CGA-44038-PK10)  
Oxygen Vent and Liquid use 3/8" NPT



**CARBON DIOXIDE FITTINGS**

**CGA 320**

Part # CGA-32038  
For CO<sup>2</sup>  
3/8" NPT  
Used for Gas/Liquid

1

3\*



**CGA 295**

Single Item - Part # CGA-29538  
(Pkg. of 10 - Part # CGA-29538-PK10)  
Industry Standard  
Used for  
Vent 3/8" NPT

2\*



\*Optional CGA Standard  
Vent/Liquid - CGA 622 Part # CGA-62238

**INERT ARGON/NITROGEN DUST CAPS**

**CGA 580 DUST CAP**

Part # CGA-580DC  
Dust Cap for Inert Gas  
use CGA 580

4



**CGA 295 DUST CAP**

Part # CGA-295DC  
Dust Cap for Inert  
Vent and Liquid

5

6



**OXYGEN DUST CAPS**

**CGA 540 DUST CAP**

Part # CGA-540DC  
Gas Dust Cap and  
Chain for CGA 540

4

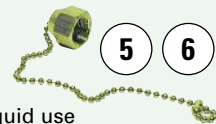


**CGA 440 DUST CAP**

Part # CGA-440DC  
Oxygen Vent and Liquid use

5

6



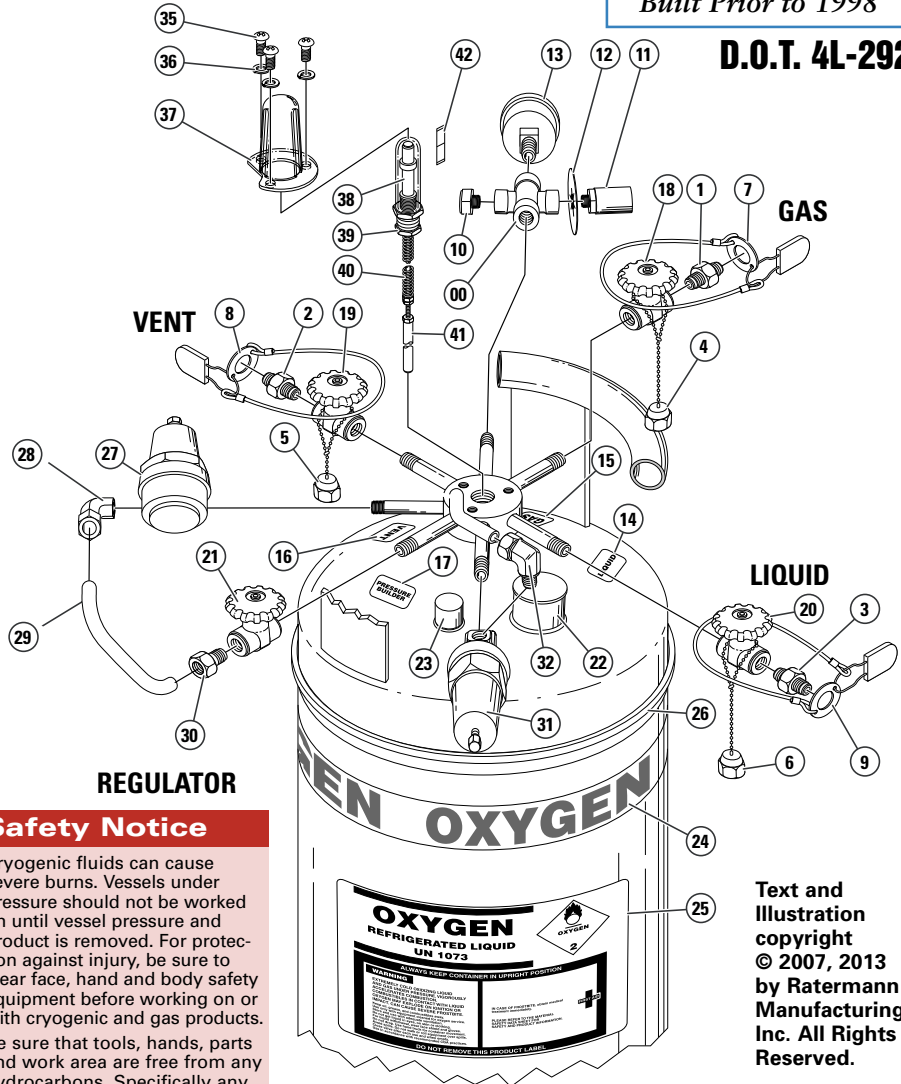
Rev: 7/1/13

**RMI® TAYLOR WHARTON STYLE XL-55 HP PB-ECONO**

Parts for

Built Prior to 1998

D.O.T. 4L-292



**Safety Notice**

Cryogenic fluids can cause severe burns. Vessels under pressure should not be worked on until vessel pressure and product is removed. For protection against injury, be sure to wear face, hand and body safety equipment before working on or with cryogenic and gas products. Be sure that tools, hands, parts and work area are free from any hydrocarbons. Specifically any dirt, oil or grease. Parts must be cleaned for oxygen service if they will be exposed to product.

Taylor-Wharton is a trademark of Taylor Wharton International, LLC. RMI® parts are not licensed, approved or sponsored by the Taylor Wharton International, LLC.

Text and Illustration copyright © 2007, 2013 by Ratermann Manufacturing, Inc. All Rights Reserved.

**SAFETY WARNING**  
Nitrile Latex-Free Gloves should be worn at all times when working on Oxygen containers.  
Nitrile Latex-Free gloves will NOT give protection from cold or cryogenic liquids.

See page 27A-4 for Nitrile Latex-Free Gloves

**CARBON DIOXIDE DUST CAPS**

**CGA 320 DUST CAP**

Part # CGA-320DC  
Dust Cap for CO<sup>2</sup>  
Gas/Liquid 3/8" NPT

4

6\*



**CGA 295 DUST CAP**

Part # CGA-295DC  
Dust Cap for Vent

5\*

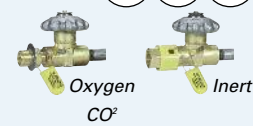


\*Optional CGA Standard  
Vent/Liquid - CGA 622 Part # CGA-622DC

**TAMPER DEVICE KITS**

Oxygen - 1 Kit  
Part # CGP-23  
Inert - 1 Kit  
Part # CGP-13  
CO<sup>2</sup> - 1 Kit  
Part # CGP-25

7 8 9



**RUPTURE DISC**

Part # BD-350  
Rupture Disc  
1/4 NPT

10



**RELIEF VALVE**

Single Item – Part # LPR-350  
(Pkg. of 5 – Part # LPR-350-PK5)  
Relief Valve Brass – 1/4 NPT 350 PSI



11

**PRESSURE RELIEF I.D. DISC**

Part # DS-350  
Color-coded pressure relief I.D. discs are imprinted with the appropriate pressure of safety relief.



12

**GAUGE**

Part # PG-600  
Pressure Gauge 2" Dial  
0-600 PSI/BAR/KPA



13

**LABEL LIQUID**

Part # DL-OL  
Decal – Liquid Valve



14

**LABEL GAS**

Part # DL-OG  
Decal – Gas



15

**LABEL VENT**

Part # DL-OV  
Decal – Vent



16

**LABEL PB**

Part # DL-OPB  
Decal – Pressure Builder Valve



17

**GAS USE VALVE**

Part # VR-38F218TB-G  
Green Handle – Valve Brass  
GH 3/8 FPT x 3/8 SCH 10  
(VALVE REBUILD KIT Pt # DV-G-RBK1)



18

**VENT USE VALVE**

Part # VR-38F218TB-S  
Silver Handle – Valve Brass  
GH 3/8 FPT x 3/8 SCH 10



19

**VALVE REBUILD KIT**

Single Item – Part # DV-RBK1  
(Pkg. of 10 – Part # DV-RBK1-PK10)

**LIQUID USE VALVE**

Part # VR-38F218TB-B  
Blue Handle – Valve Brass  
BH 3/8 FPT x 3/8 SCH 10  
(VALVE REBUILD KIT Pt # DV-B-RBK1)



20

**VALVE PRESSURE BUILDER**

Part # VR-38F38F  
Short-stem shut off valves 3/8" FNPT  
VALVE REBUILD KIT  
Single Item – Part # DV-RBK1  
(Pkg. of 10 – Part # DV-RBK1-PK10)



21

**CAP**

Part # DC-CAP  
Cap Vinyl – Plastic Blue



22

**CAP**

Part # PC-M78  
Pumpout Cap



23

**DEWAR 360° WRAP AROUND TAPE**

Part #'s for Gas Tape:  
DG-TC Carbon Dioxide DG-TO Oxygen  
DG-TN Nitrogen DG-TA Argon



24

Part #'s for Medical Tape:

DG-MEDO Medical Oxygen  
DG-MEDN Medical Nitrogen  
DG-MEDNO Med Nitrous Oxide  
DG-MEDCO2 Med Carbon Dioxide



**DEWAR LABELS**

Part #'s  
DB-O Oxygen DB-A Argon  
DB-N Nitrogen DB-CO2 CO2  
DB-USP Oxygen USP  
DB-NNF Nitrogen NF  
DB-NO Nitrous Oxide



25

**LABEL BUFFER**

Part # LB-D160B  
Color coded bands can be used to identify pressure: Yellow for 22 PSI, Blue for 235 PSI, and gray.



26

**PRESSURE BUILDER REGULATOR**

Part # CR-300



27

**ELBOW**

Part # FIT-90ECF38M14  
Elbow Brass 90D  
3/8 ODT x 1/4 MPT



28

**TUBING**

Part # CCT-TA



29

**FITTING**

Part # FIT-M38OD38



30

**ECONOMIZER REGULATOR**

Part # CE-325



31

**ELBOW**

Part # FIT-90ECF38M14  
Elbow Brass 90D  
3/8 ODT x 1/4 MPT



32

**SCREW**

Part # CSS-T3



35

**LOCKWASHER**

Part # LC-T3



36

**GAUGE PROTECTOR**

Part # SGP-TFC



37

**LIQUID LEVEL GAUGE**

**Obsolete**  
You will need a conversion kit to change to the new style Float Gauge. See Sight Gauge Conversion Kit, circle number 45, on this page.

38

**O-RING Obsolete**

You will need a conversion kit to change to the new style Float Gauge. See Sight Gauge Conversion Kit, circle number 45, on this page.

39

**SPRING Obsolete**

You will need a conversion kit to change to the new style Float Gauge. See Sight Gauge Conversion Kit, circle number 45, on this page.

40

**FLOAT ROD**

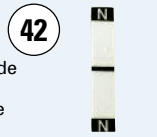
Part # FR-5055



41

**DECALS**

Part #'s SG-DA Argon  
# SG-DCO2 Carbon Dioxide  
# SG-DN Nitrogen  
# SG-DN2O Nitrous Oxide  
# SG-DO Oxygen



42

**SIGHT GAUGE CONVERSION KIT**

**SIGHT GAUGE CONVERSION KIT**

45 Pt # LL-RETRO45-9C55  
Includes the following:

46 **SCREW**  
Part # CSS-T3

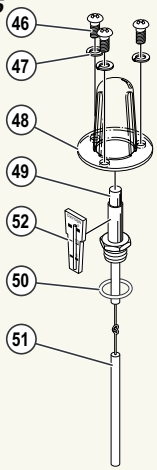
47 **WASHER**  
Part # LC-T3

48 **GAUGE PROTECTOR**  
Part # SGP-TRC

49 **LIQUID LEVEL GAUGE**  
Part # LL-TW-M450

50 **O-RING**  
Part # SGP-TFC-OR

51 **FLOAT ROD**  
Part # FR-5055



– Sold Separately –

**\*SNAP ON INDICATOR**

Part #'s LL-TW-RA Argon  
# LL-TW-RCD CO2  
# LL-TW-RN Nitrogen  
# LL-TW-RNO Nitrous Oxide  
# LL-TW-RO Oxygen



**MEDICAL CGA FITTINGS**

**TAMPER PROOF DEVICE**

This system cannot be removed without rendering the CGA outlet connection unusable.



**INERT TAMPER PROOF DEVICE**

1 **CGA 580** (Gas use)  
Pkg. of 5 Single Item  
Pt # TPG-580-PK5 Pt # TPG-580

2 **CGA 295** (Vent & Liquid use)  
Pkg. of 5 Single Item  
3 Pt # TPG-295-PK5 Pt # TPG-295

**OXYGEN TAMPER PROOF DEVICE**

1 **CGA 540** (Gas use)  
Pkg. of 5 Single Item  
Pt # TPG-540-PK5 Pt # TPG-540

2 **CGA 440** (Vent & Liquid use)  
Pkg. of 5 Single Item  
3 Pt # TPG-440-PK5 Pt # TPG-440

**CO2 TAMPER PROOF DEVICE**

1 **CGA 320** (Carbon Dioxide Gas)  
Pkg. of 5 Single Item  
Pt # TPG-320-PK5 Pt # TPG-320

2 **CGA 622** (Vent & Liquid use)  
Pkg. of 5 Single Item  
3 Pt # TPG-622-PK5 Pt # TPG-622